

Model 3180C

Mini-Bicon Antenna

User Manual



Model 3180C with conical elements



Model 3180C with cage elements

 **ETS-LINDGREN**TM
An ESCO Technologies Company

ETS-Lindgren L.P. reserves the right to make changes to any product described herein in order to improve function, design, or for any other reason. Nothing contained herein shall constitute ETS-Lindgren L.P. assuming any liability whatsoever arising out of the application or use of any product or circuit described herein. ETS-Lindgren L.P. does not convey any license under its patent rights or the rights of others.

© Copyright 2016 by ETS-Lindgren L.P. All Rights Reserved. No part of this document may be copied by any means without written permission from ETS-Lindgren L.P.

Trademarks used in this document: The *ETS-Lindgren* logo is a trademark of ETS-Lindgren L.P.

Revision Record | MANUAL, MODEL 3180C | Part #399407, Rev. A

Revision	Description	Date
A	Initial Release	September, 2016

Table of Contents

Notes, Cautions, and Warnings.....	v
1.0 Introduction	7
Tripod Options	8
ETS-Lindgren Product Information Bulletin	9
2.0 Maintenance	11
Annual Calibration	11
Replacement and Optional Parts	12
Service Procedures	12
3.0 Specifications.....	13
Electrical Specifications	13
Physical Specifications	14
Cage Elements	14
Conical Elements.....	15
Dimensional Drawings	16
4.0 Assembly Instructions	19
Parts to Assemble.....	19
Cage Elements	19
Conical Elements.....	20
Steps to Assemble.....	20
5.0 Mounting Instructions	21
Using Included Mounting Adapters	22
Using the Stinger Mount	23
Additional Mounting Options	24
4-TR Mounting Options	24
7-TR and Mast Mounting Options.....	25
2x2 Boom Mounting Options	26
6.0 Application	27
7.0 Typical Data.....	29
Typical Gain and Antenna Factor—Both Elements	29
Typical VSWR—Both Elements	30
Typical Radiation Patterns	31

Model 3180C, Conical Elements, 400 MHz–900 MHz	31
Model 3180C, Conical Elements, 1000 MHz–3000 MHz	32
Model 3180C, Cage Elements, 40 MHz–100 MHz	33
Model 3180C, Cage Elements, 200 MHz–600 MHz	34
Model 3180C, Cage Elements, 700 MHz–1000 MHz	35
Appendix A: Warranty	37

Notes, Cautions, and Warnings



Note: Denotes helpful information intended to provide tips for better use of the product.



Caution: Denotes a hazard. Failure to follow instructions could result in minor personal injury and/or property damage. Included text gives proper procedures.



Warning: Denotes a hazard. Failure to follow instructions could result in **SEVERE** personal injury and/or property damage. Included text gives proper procedures.

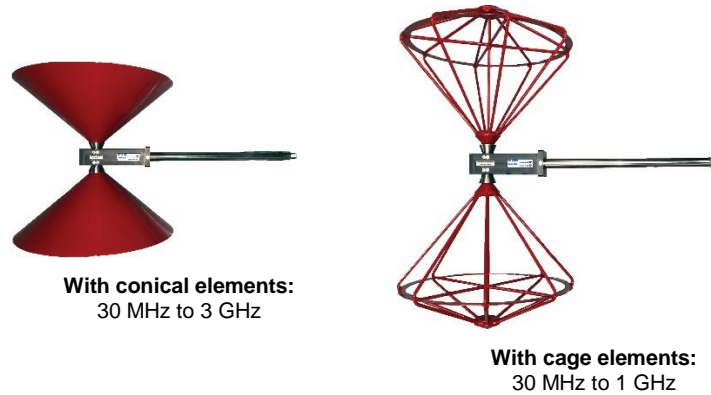


Note: See the ETS-Lindgren *Product Information Bulletin* for safety, regulatory, and other product marking information.

This page intentionally left blank.

1.0 Introduction

The **ETS-Lindgren Model 3180C Mini-Bicon Antenna** is designed for optimal performance across a frequency range of 30 MHz to 1 GHz or 30 MHz to 3 GHz, depending on the elements:



The Model 3180C ships with both sets of elements. The antenna is designed to have a radiation pattern that is omni-directional in the H-plane and maintains a single lobe in the E-plane across the range. The elements have been optimized to avoid splitting of the main radiation beam in the elevation cut

The Model 3180C is ideal for the Free Space NSA (FSNSA) test for fully anechoic rooms. The small size allows for harmonic monitoring when testing per IEC 61000-4-3.

In addition to covering the traditional frequency range EMC measurements, the Model 3180C covers all the VHF and part of the UHF bands, making it ideal for spectrum monitoring of FM, TV, and some cellular phones.

The Model 3180C includes a stinger mount and standard mounting hardware. For the variety of mounting options available for the Model 3180C, see *Mounting Instructions* on page 21.

Tripod Options

ETS-Lindgren offers the following nonmetallic, non-reflective tripods for use at both indoor and outdoor EMC test sites.

- **4-TR Tripod**—Constructed of linen phenolic and delrin, designed with an adjustable center post for precise height adjustments. Maximum height is 2.0 m (80.0 in), and minimum height is 94 cm (37.0 in). This tripod can support up to an 11.8 kg (26.0 lb) load.



- **7-TR Tripod**—Constructed of PVC and fiberglass components, providing increased stability for physically large antennas. The unique design allows for quick assembly, disassembly, and convenient storage. Allows several different configurations, including options for manual or pneumatic polarization. Quick height adjustment and locking wheels provide ease of use during testing. Maximum height is 2.17 m (85.8 in), with a minimum height of 0.8 m (31.8 in). This tripod can support a 13.5 kg (30 lb) load.



ETS-Lindgren Product Information Bulletin

See the ETS-Lindgren *Product Information Bulletin* included with your shipment for the following:

- Warranty information
- Safety, regulatory, and other product marking information
- Steps to receive your shipment
- Steps to return a component for service
- ETS-Lindgren calibration service
- ETS-Lindgren contact information

This page intentionally left blank.

2.0 Maintenance



Before performing any maintenance, follow the safety information in the ETS-Lindgren *Product Information Bulletin* included with your shipment.



Maintenance of the Model 3180C is limited to external components such as cables or connectors.

If you have any questions concerning maintenance, contact ETS-Lindgren Customer Service.

Annual Calibration

See the *Product Information Bulletin* included with your shipment for information on ETS-Lindgren calibration services.

Replacement and Optional Parts



ETS-Lindgren may substitute a similar part or new part number with the same functionality for another part/part number. Contact ETS-Lindgren for questions about part numbers and ordering parts.

Following are the part numbers for ordering replacement or optional parts for the Model 3180C Mini-Bicon Antenna.

Part Description	Part Number
Clamp Block	102108
Support Base	101942B
Support Rod White	100733



For additional mounting hardware, see *Mounting Instructions*.

Service Procedures

For the steps to return a system or system component to ETS-Lindgren for service, see the *Product Information Bulletin* included with your shipment.

3.0 Specifications

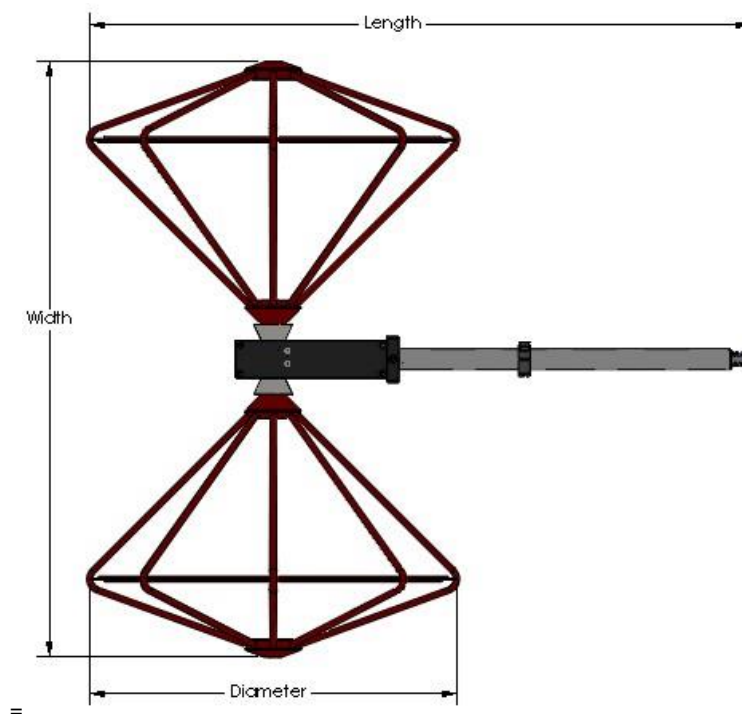
Electrical Specifications

	Model 3180C, Conical Elements	Model 3180C, Cage Elements
Frequency Range:	30 MHz–3 GHz	30 MHz–1 GHz
VSWR Ratio (Average):	~3:1	~3:1
Maximum Continuous Power:	250 mW	250 mW
Impedance:	50 Ω	50 Ω
Connector:	Type N female	Type N female

Physical Specifications

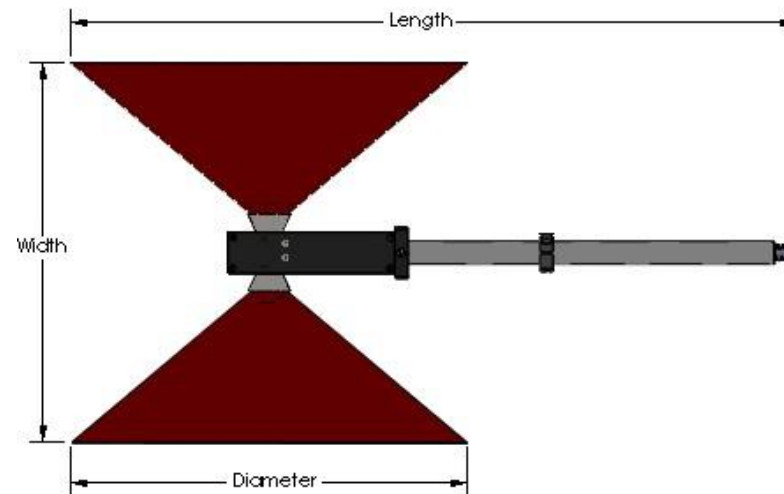
CAGE ELEMENTS

	Model 3180C, Cage Elements
Width (Element, tip-to-tip):	64.9 cm 25.5 in
Length:	72.4 cm 28.5 in
Diameter:	40.0 cm 15.7 in

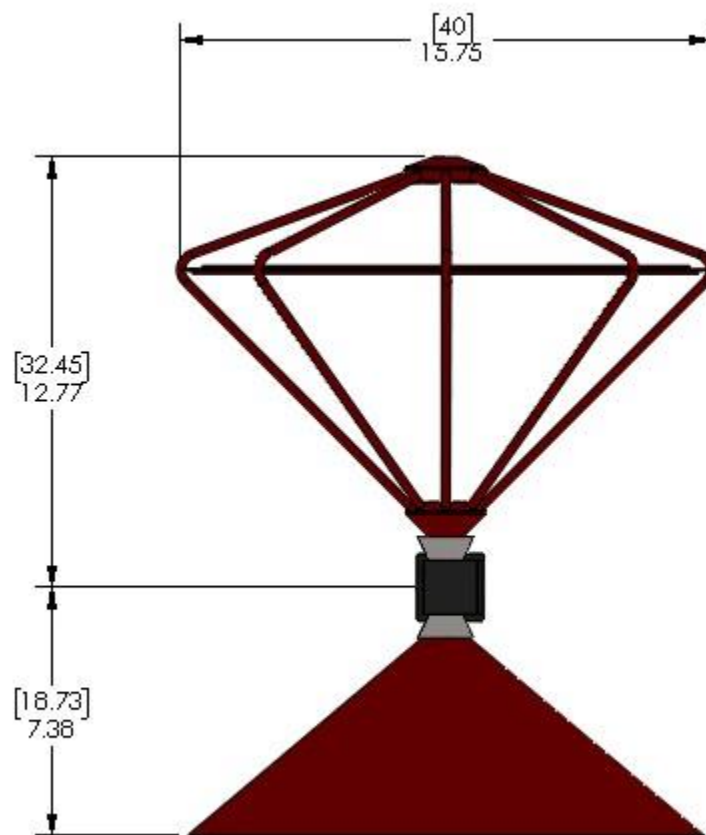


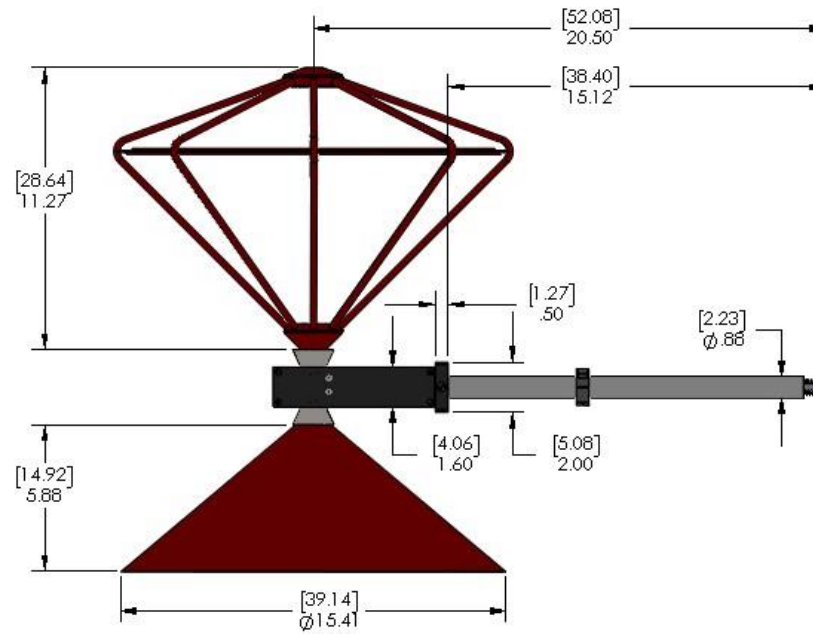
CONICAL ELEMENTS

	Model 3180C, Conical Elements
Width (Element, tip-to-tip):	37.5 cm 14.8 in
Length:	71.71 cm 28.2 in
Diameter:	39.1 cm 15.4 in



Dimensional Drawings





This page intentionally left blank.

4.0 Assembly Instructions



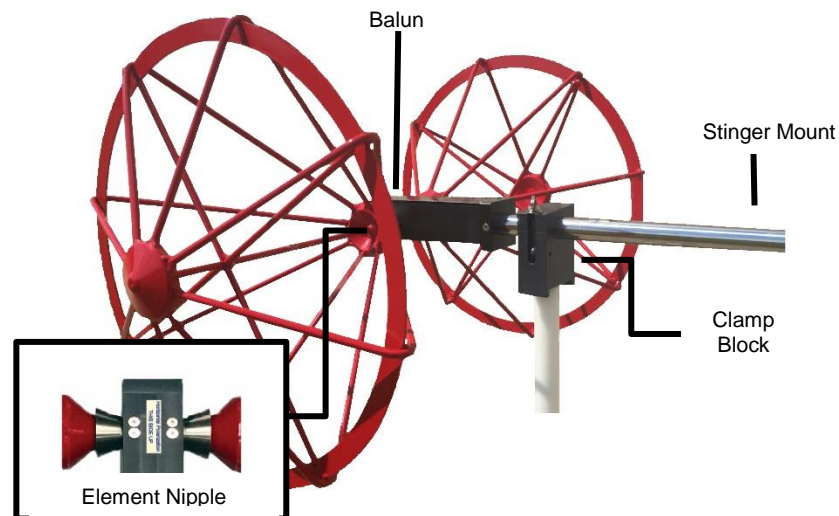
Before connecting any components, follow the safety information in the ETS-Lindgren *Product Information Bulletin* included with your shipment.

Parts to Assemble

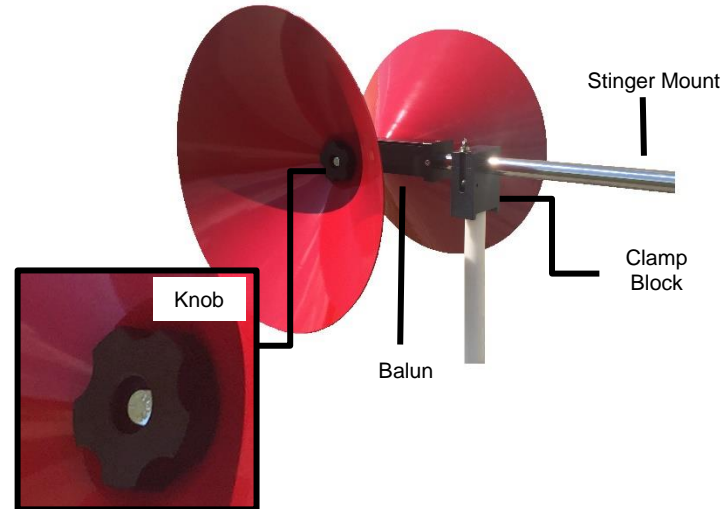
The Model 3180C Mini-Bicon Antenna is shipped unassembled, and includes these parts:

- Balun—includes attached stinger mount
- Element (2)
- Knob (for use on cone assembly only)
- Clamp block
- Support rod and base

CAGE ELEMENTS



CONICAL ELEMENTS



Steps to Assemble

1. Cage Assembly: Line up the screw threads with the receptacle hole on the element nipple attached to the balun and turn the element until it is firmly secured.
2. Cone Assembly: Place Knob into cone and through clearance hole in cone then repeat step 1.



Do not cross thread this connection or permanent damage to the joint could occur.

5.0 Mounting Instructions



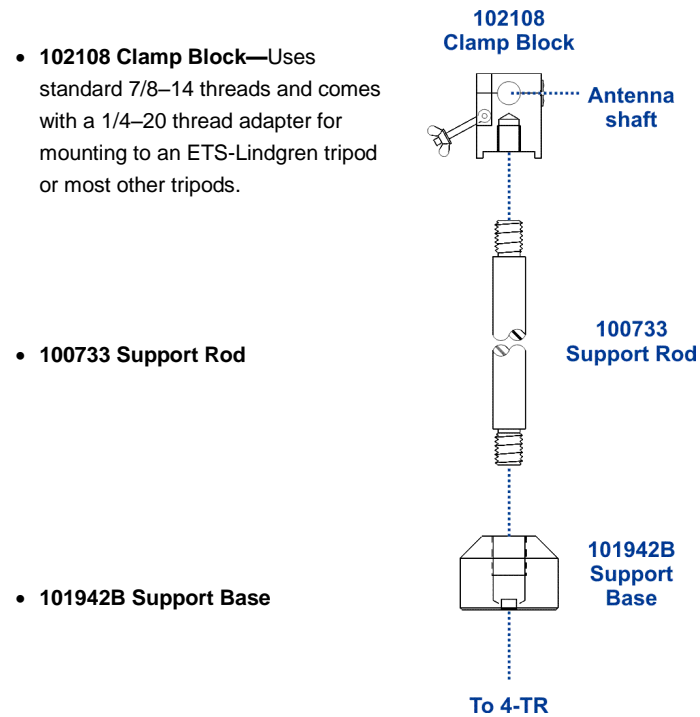
Before connecting any components, follow the safety information in the ETS-Lindgren *Product Information Bulletin* included with your shipment.



The Model 3180C is a precision measurement device. Handle with care.

Using Included Mounting Adapters

The Model 3180C Mini-Bicon Antenna ships with these mounting adapters, used to mount the antenna to a 4-TR tripod:



To use these adapters to mount the Model 3180C to a 4-TR tripod:

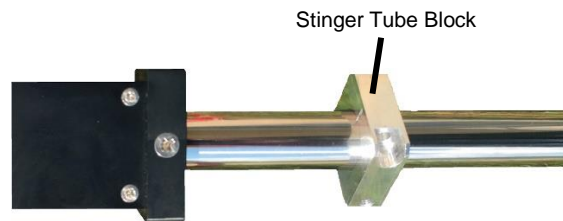
1. Assemble the clamp block, support base, and support rod, and attach the support base to the 4-TR tripod.
2. Unscrew the clamp block latch and open the top.
3. Insert the balun into the clamp block and close the top over the balun.
4. Move the latch to the closed position and tighten so the balun is held securely.
5. Attach the cable to the output connector on the antenna.

Using the Stinger Mount

The stinger on the Model 3180C enables you to mount to antenna directly to an ETS-Lindgren 7-TR Tripod Positioner with the stinger tube block (PN 113138).



Additional hardware is required to use the stinger to mount the Model 3180C to a mast. For information on ordering optional mounting hardware, contact the ETS-Lindgren Sales Department.

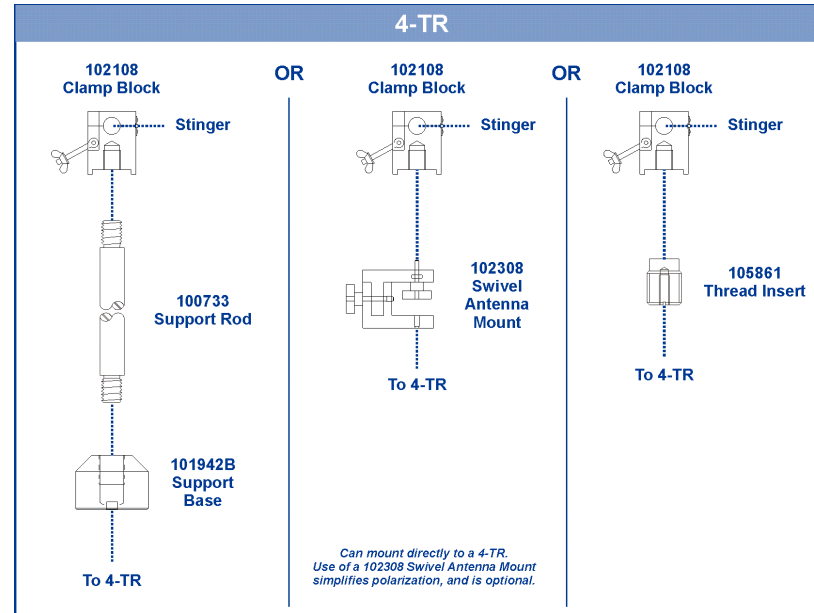


Do not use the stinger to mount the Model 3180C onto a 4-TR tripod.

Additional Mounting Options

4-TR MOUNTING OPTIONS

Following are additional options for mounting the Model 3180C onto an ETS-Lindgren 4-TR tripod. Contact the ETS-Lindgren Sales Department for information on ordering optional mounting hardware.



7-TR AND MAST MOUNTING OPTIONS

The stinger on the Model 3180C enables you to mount to antenna directly to an ETS-Lindgren 7-TR Tripod Positioner. Following are additional options for mounting the Model 3180C onto an ETS-Lindgren 7-TR Tripod Positioner.



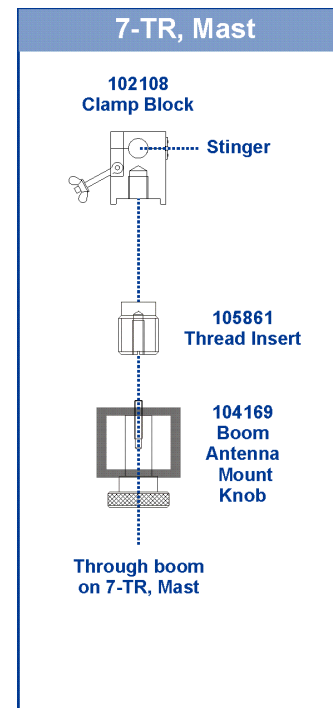
The mast can be used independently. However, the 7-TR must be used in conjunction with the mast.

Contact the ETS-Lindgren Sales Department for information on ordering optional mounting hardware.



Mast refers to 2070 Series, 2075, and 2175 Antenna Towers.
7-TR refers to 109042, 108983, and 108507 booms:

- *109042 boom*—Straight boom; for general antenna mounting on a 7-TR
- *108983 boom*—Offset boom; for general antenna mounting on a 7-TR with pneumatic or manual polarization; can also be used to mount stinger-type antennas
- *108507 boom*—For Model 3106 Series antennas only; when changing polarization, maintains centerline rotation.

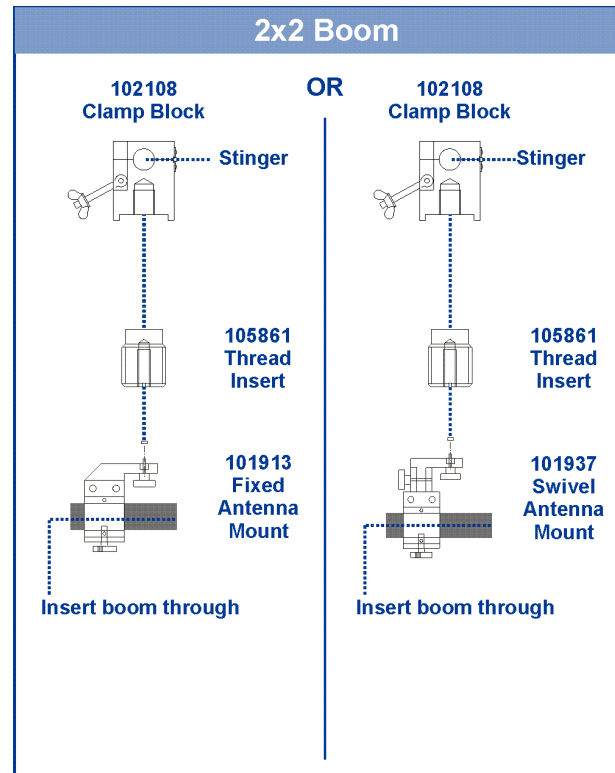


2x2 BOOM MOUNTING OPTIONS

Following are additional options for mounting the Model 3180C onto a 2x2 boom. Contact the ETS-Lindgren Sales Department for information on ordering optional mounting hardware.



2x2 boom refers to a typical 2-inch by 2-inch boom.



6.0 Application

The Model 3180C Mini-Bicon Antenna is ideally suited for swept site attenuation measurements per ANSI and FCC specifications. The Model 3180C can be used for horizontal and vertical site attenuation measurements. The maximum continuous input power for the Model 3180C is 250 mW when using the conical elements and the cage elements.

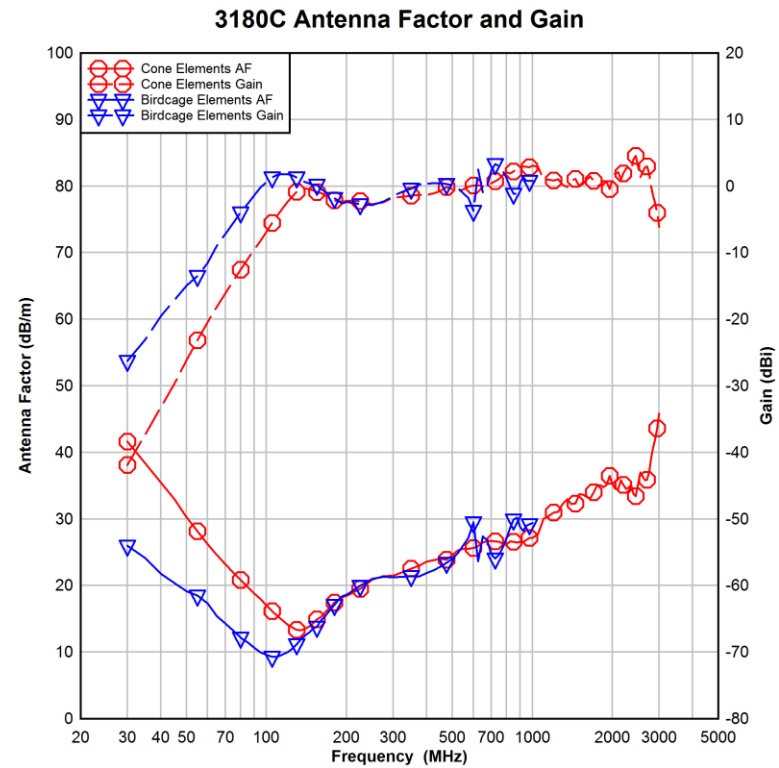
Each antenna is calibrated during manufacturing. The results of the calibration are tabulated as gain and antenna factor vs. frequency for use in Specification Compliance Testing. Typical data for the Model 3180C is provided in the next section.

The Model 3180C is also ideal to measure the amplifier harmonics during immunity testing per IEC61000-4-3. The antenna is placed at the location of the immunity plane and the output is connected to a spectrum analyzer. The rest of the test set up is left exactly as-is during the normal immunity test. In this way the level of the harmonics measured take into account the antenna, chamber, and amplifier.

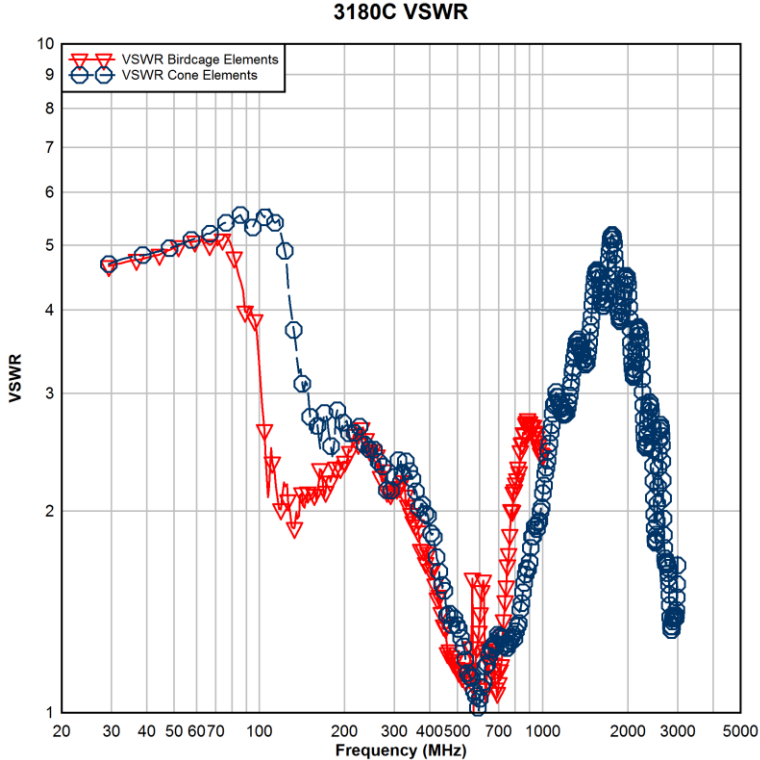
This page intentionally left blank.

7.0 Typical Data

Typical Gain and Antenna Factor—Both Elements

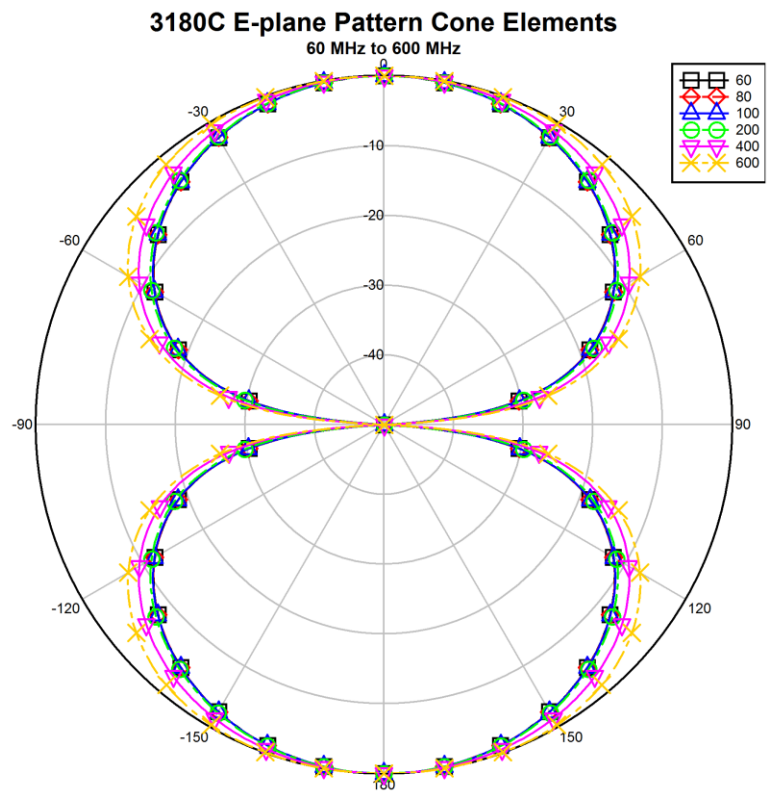


Typical VSWR—Both Elements

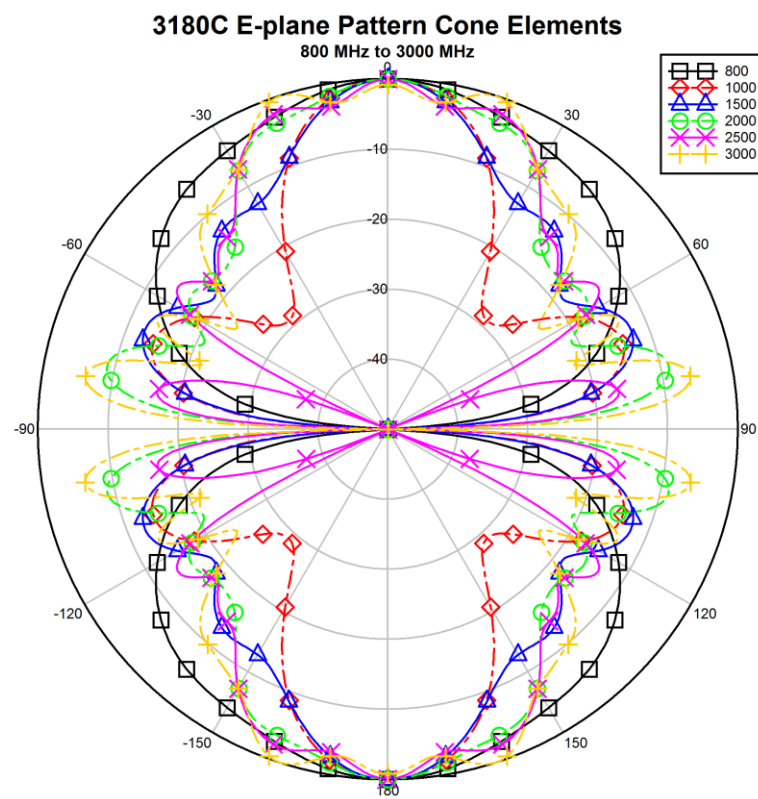


Typical Radiation Patterns

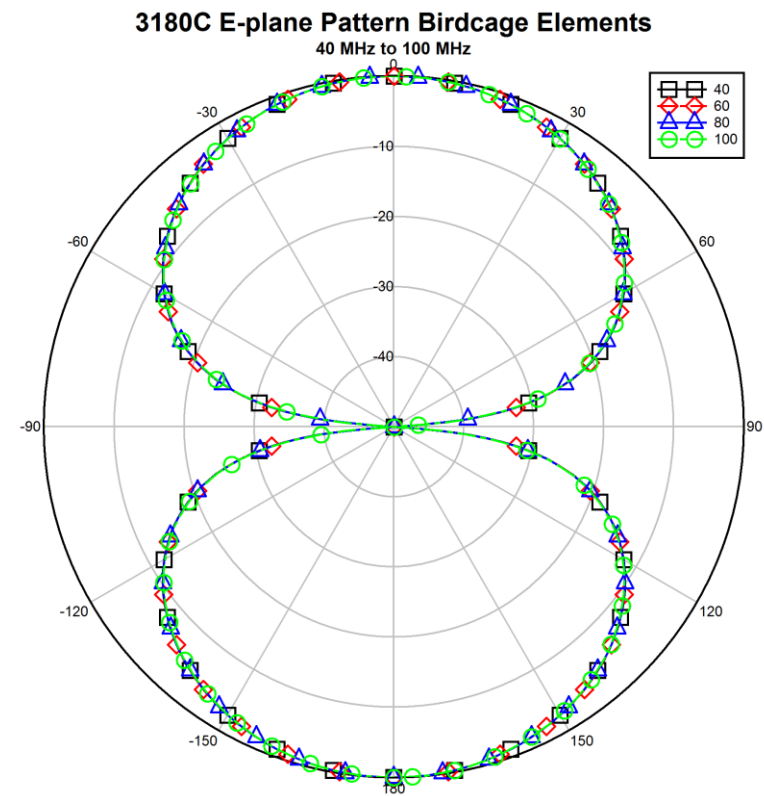
MODEL 3180C, CONICAL ELEMENTS, 400 MHz–900 MHz



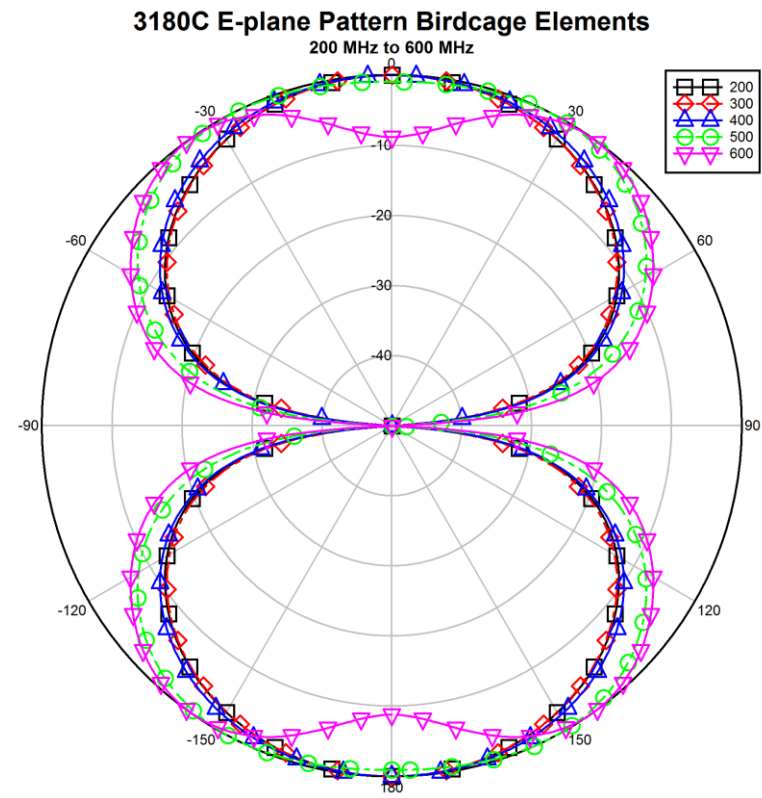
MODEL 3180C, CONICAL ELEMENTS, 1000 MHz–3000 MHz



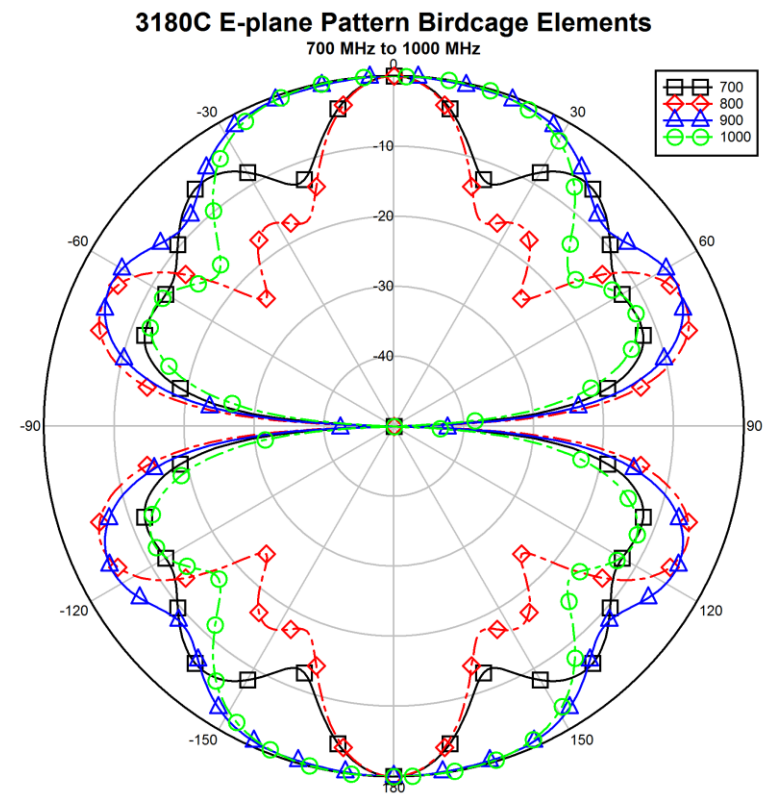
MODEL 3180C, CAGE ELEMENTS, 40 MHz–100 MHz



MODEL 3180C, CAGE ELEMENTS, 200 MHz–600 MHz



MODEL 3180C, CAGE ELEMENTS, 700 MHz–1000 MHz



This page intentionally left blank.

Appendix A: Warranty



See the *Product Information Bulletin* included with your shipment for the complete ETS-Lindgren warranty for your Model 3180C Mini-Bicon Antenna.

DURATION OF WARRANTIES FOR MODEL 3180C

All product warranties, except the warranty of title, and all remedies for warranty failures are limited to two years.

Product Warranted	Duration of Warranty Period
Model 3180C Mini-Bicon Antenna	2 Years